

THESE DOCUMENTS ARE NOT  
VALID UNLESS THEY BEAR THE  
SEAL AND SIGNATURE OF A  
REGISTERED ARCHITECT

**Avalon**  
Kimbel Court at Village Parkway  
Coppell, Texas 75019

REVISION	BY

ISSUE FOR	DATE
DRAWN	
CHECKED	
DATE	
AS SHOWN	
DATE	
SHEET	

**A3.00**  
OF SHEETS



**01 East Elevation**  
Scale: 1/8" = 1'-0"



**02 West Elevation**  
Scale: 1/8" = 1'-0"



8" TALL CEDAR BOARD ON BOARD, WITH GALVANIZED STEEL POSTS  
AT 6" O.C. SET 4" IN GROUND IN 4" DIAMETER CONCRETE FOOTING

**05 South and West Perimeter Fence**  
No Scale



**03 North Elevation Bldg 1 (between bldgs)**  
Scale: 1/8" = 1'-0"



**03 North Elevation**  
Scale: 1/8" = 1'-0"

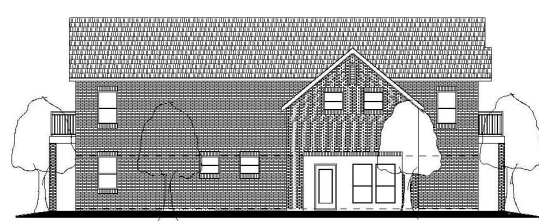


**06 Patio Fence**  
No Scale  
42 INCH HIGH BLACK PAINTED WROUGHT IRON PATIO ENCLOSURE

**Exterior Masonry Areas**

BUILDING 1 - SOUTHWEST

EAST ELEVATION, EXCLUSIVE OF DOORS, WINDOWS, BALCONY FASCIA	895 SF
2-D AREA =	852 SF (74%)
BRICK AREA =	234 SF (26%)
CEMENT PLASTER AREA =	234 SF (26%)
SOUTH ELEVATION =	955 SF (100%)
BRICK AREA =	955 SF (100%)
WEST ELEVATION, EXCLUSIVE OF DOORS, WINDOWS, BALCONY FASCIA	828 SF
2-D AREA =	828 SF (74%)
BRICK AREA =	815 SF (26%)
CEMENT PLASTER AREA =	215 SF (26%)
NORTH SIDE (BETWEEN BUILDINGS)	955 SF
CEMENT FIBER SID (HARDBOARD)	955 SF (100%)
CUMULATIVE AREAS	
BRICK	2,230 SF (61.4%)
CEMENT PLASTER	440 SF (12.3%)
CEMENT FIBER BOARD	355 SF (9.3%)



**04 South Elevation**  
Scale: 1/8" = 1'-0"